

Welcome to the Autonomous Café

Grab a virtual coffee
and come meet GGEDC staff
and other Roundtable participants

–

You will be admitted shortly

Please take a moment to participate with **Padlet 1** Questions
provided in the “Chat” option



Welcome to Day 1
GGEDC 2021 Mobility Economic Roundtable
February 11, 2021

The Virtual Café will close in
3 minutes



WELCOME

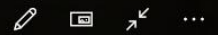
TOMMY HAWS
BOARD PRESIDENT
GGEDC



0:00:11



0:04:31



ROUNDTABLE PURPOSE & OVERVIEW

MICHAEL SAGE, CEcD
DEPUTY DIRECTOR
GGEDC

(5 min.)

Please take a moment to participate with
Poll 1 Question

Please take a moment to participate with
Poll 2 Question

**BUILDING ON STRONG FOUNDATIONS
BASED ON TRANSPORTATION**

***PATTY LUNDSTROM, CEcD
EXECUTIVE DIRECTOR
GGEDC***

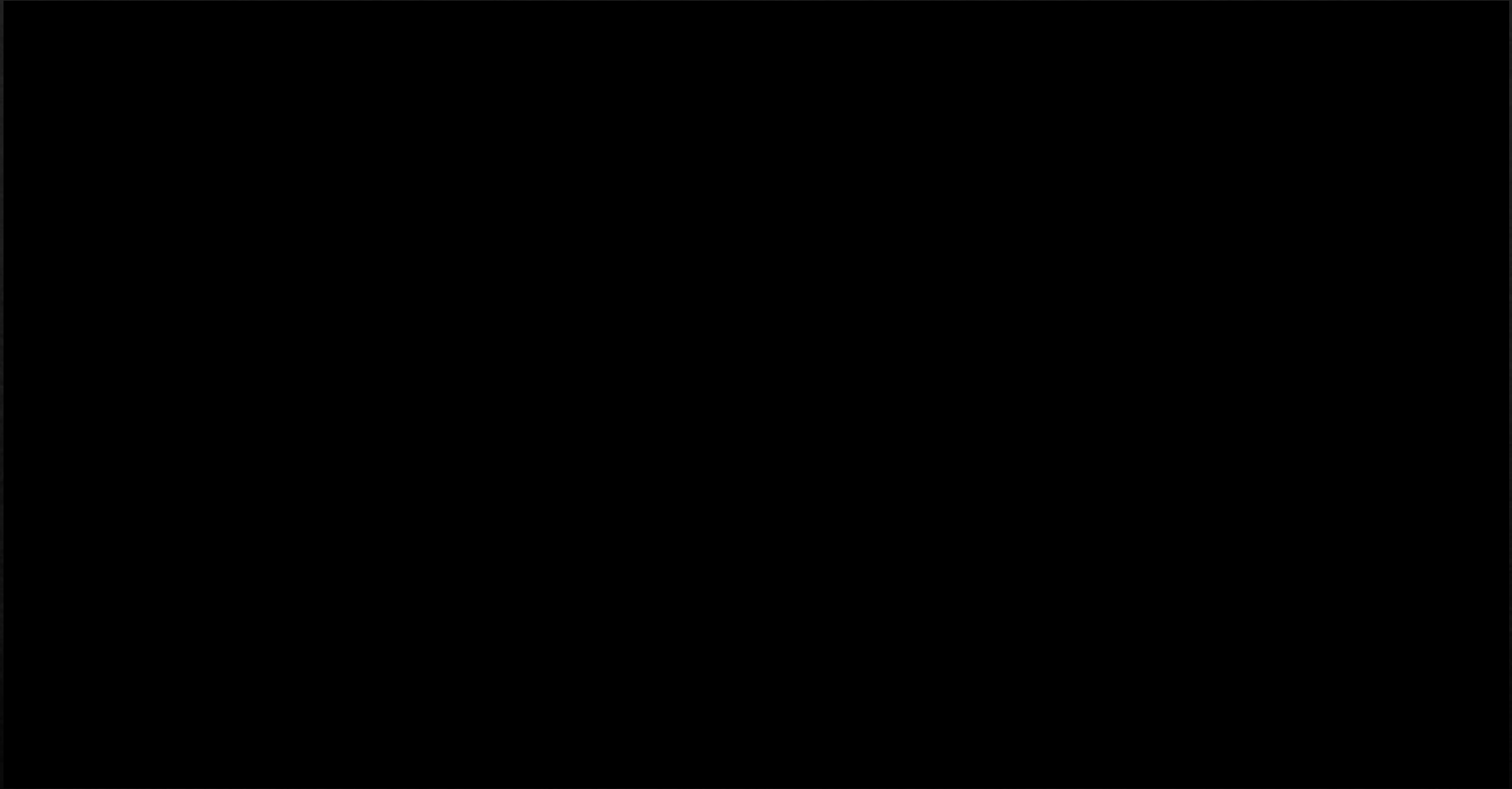
(15 min.)

Please take a moment to participate with
Poll 3 Question

**NM MOBILITY STRATEGY
& GALLUP MOBILITY HUMB**

***ADAM WASSERMAN & LOIS YATES, CEcD
MANAGING PARTNERS
GLD PARTNERS, LLC***

(25 min.)



Gallup Mobility Investment District Components

Highway Corridor Testing Terminus Hub

Truck Mobility Complex

Gallup High-Efficiency Logistics
Investment Hub



Gallup Closed Course Mobility Test Complex

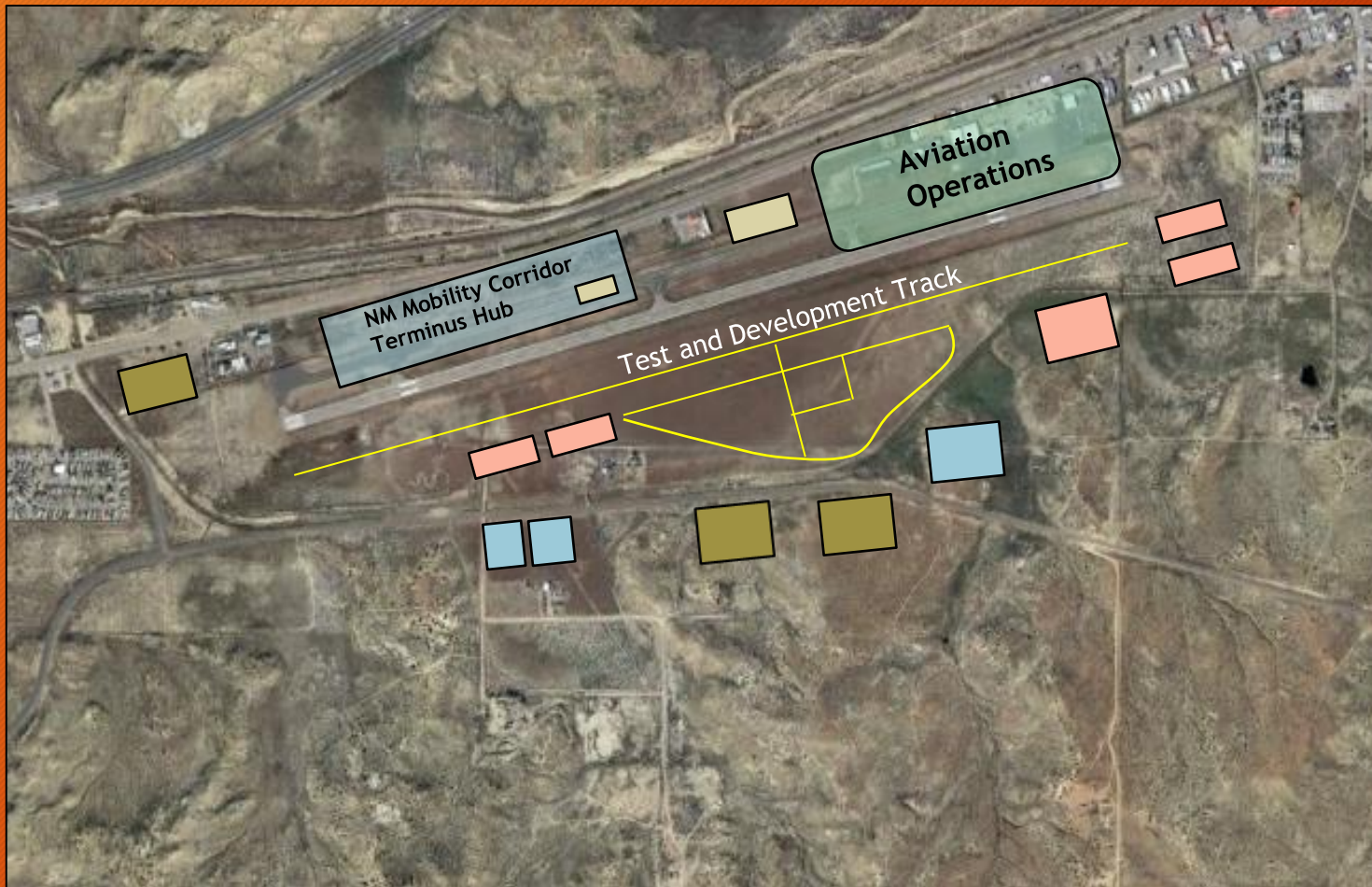
Mobility Engineering Centers

Airport Mobility Zone

Airport Mobility Hub Elements



Mobility Investment District



Aviation Operations Zone
Airport Terminal, Operational
Ramp, Hangers, FBO Operations

NM Mobility Corridor Terminus Hub

Test and Development Course and
Support Buildings Including Office,
Shop, Storage and Meeting Space

Onsite & Offsite Corporate
Engineering, Maintenance, Storage,
Office & Prototyping Facilities

DRIVING MOBILITY ON NM ROADS: NMDOT's ROLE IN AUTONOMOUS DEVELOPMENT

***CHARLES REMKES
ITS BUREAU CHIEF
NM DEPT. OF TRANSPORTATION***

(15 min.)

5 minutes live Q&A

Please take a moment to participate with
Poll 4 Question

PANEL DISCUSSION #1: BUILDING THE MOBILITY INDUSTRY IN NM: VIEWS FROM THE PRIVATE SECTOR

Panelists:

Ritchie Huang, *Daimler Trucks*

Sam Saad, *Gatik*

Thomas Graef, *Kalmar Global*

Webb Johnson, *Pajarito Powder*

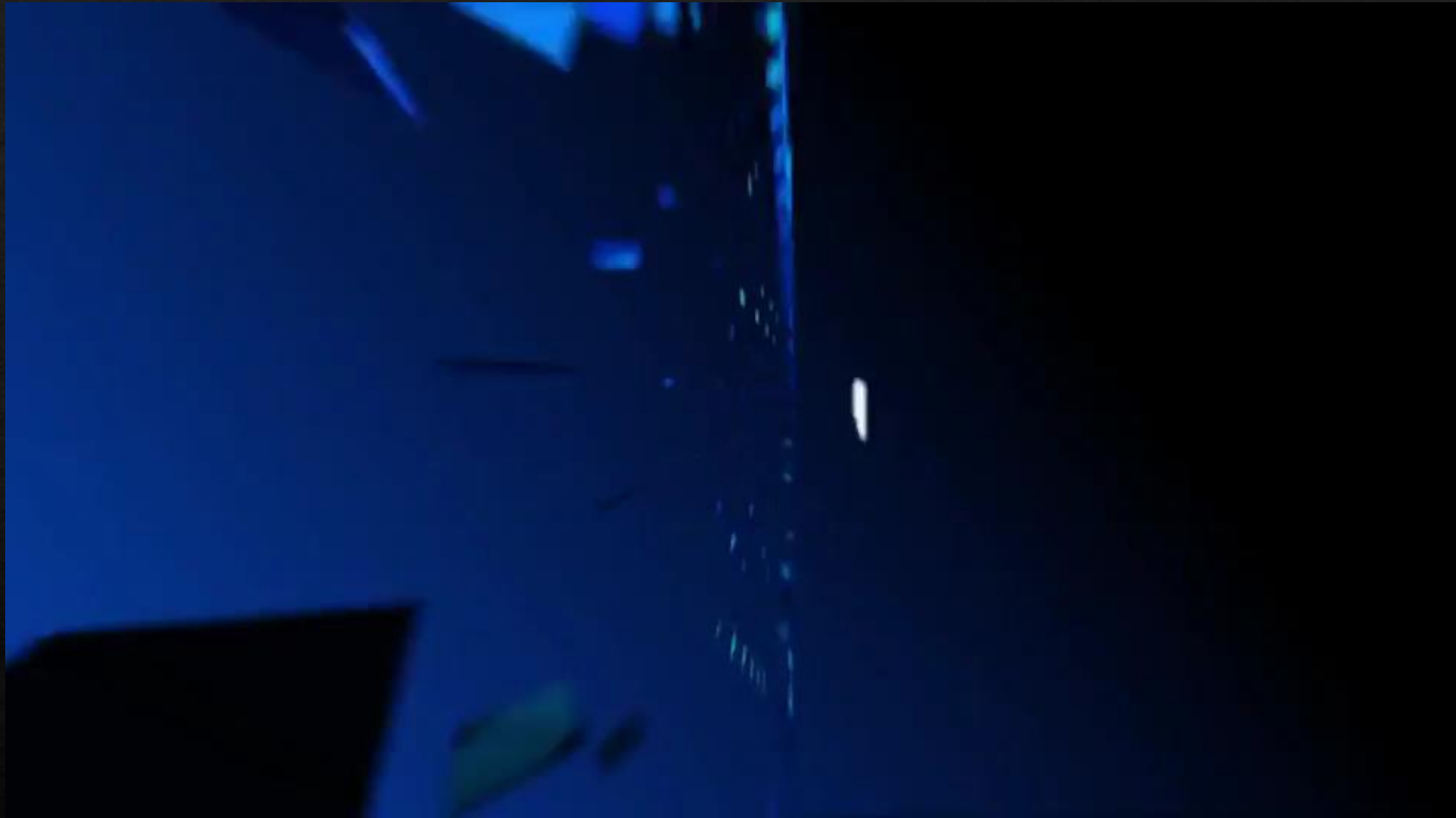
John Knauss, *Zayo*

The logo features a large, stylized letter 'G' in purple with a yellow outline. The top-right portion of the 'G' is replaced by a purple arrow pointing towards the right.

-- VIDEO BREAK --
Stay & View the video

GREATER
ALLIANCE
ECONOMIC DEVELOPMENT CORPORATION
moving forward

Tesla Plans to Build Factory



The logo for Greater Allegheny Economic Development Corporation features a large, stylized letter 'G' on the left. The 'G' is filled with a purple-to-white gradient and has a yellow outline. The top of the 'G' is shaped like an arrow pointing to the right. To the right of the 'G', the words 'GREATER ALLEGHENY' are written in a large, purple, serif font. Below this, 'ECONOMIC DEVELOPMENT CORPORATION' is written in a smaller, purple, sans-serif font, and the tagline 'moving forward' is written in a purple, italicized, sans-serif font at the bottom.

-- BREAK CONTINUED --

See You All Shortly --



WELCOME BACK!

Please take a moment to participate with
Poll 5 Question

BREAKOUT GROUPS – OVERVIEW

(10mins)

BREAKOUT GROUP – SESSION 1
(25 minutes)

BREAKOUT GROUP – SESSION 2
(25 minutes)

The logo features a large, stylized letter 'G' in purple with a yellow outline. The top-right portion of the 'G' is replaced by a purple arrow pointing towards the right.

**PLEASE JOIN THE ASSIGNED
BREAKOUT ROOM**

GREATER ALLEGHENY
ECONOMIC DEVELOPMENT CORPORATION
moving forward



WELCOME BACK!



PLENARY GENERAL DISCUSSION / Q&A

***LOIS YATES & ADAM WASSERMAN, Managing
Partner – GLD Partners***

AND

MICHAEL SAGE, Deputy Director - GGEDC

**Please help us improve
future virtual events
by taking a brief survey.
Your feedback is extremely valuable!**

ADJOURNED!

**Thanks for participating in the
Economic Roundtable on Mobility
We will see you tomorrow**

QUESTIONS?

Bruce Armstrong
Economic Development Manager

GGEDC

bruce@gallupedc.com

(505) 722-2980

For Roundtable resources please visit website

<https://sites.google.com/view/greatergallupedc>