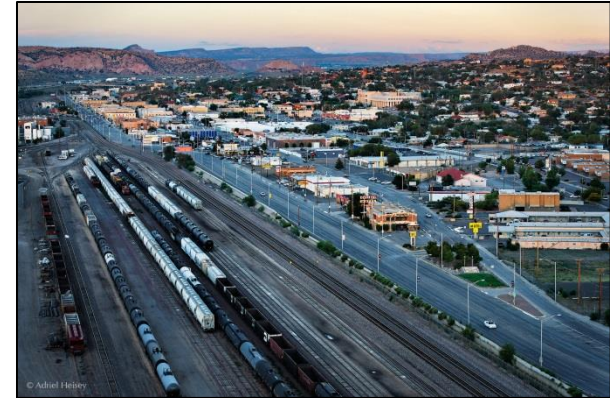


# Greater Gallup Economic Development Corporation



*Gallup, New Mexico*  
*Building a Strong Foundation Based in Transportation*

February 11, 2021 | Economic Roundtable

# Greater Gallup Economic Development Corporation

- Est. in 2012
- 501c3 Not-for-Profit
- Economic Development Organization
  - City of Gallup
  - McKinley County
- Member of the International Economic Development Council (IEDC)

# Mission Statement

Drive economic growth through building on local assets  
and strategic partnering to target attraction and  
recruitment of business and industrial employers  
that provide economic base jobs  
in the Gallup-McKinley County area.

# What We Do

## **GGEDC ECONOMIC DEVELOPMENT SERVICES:**

- Site Selection Assistance
- Economic Incentive Coordination with Local, County & State Agencies
- Business Advocacy, Permit, and Regulatory Approval assistance with Local, County, and State Agencies
- Comprehensive Labor Market Information
- Custom Research and Demographic Information
- Coordination with NM Partnership for nationwide recruitment and marketing.

# Business Retention & Expansion

## Business Retention & Expansion:

Main goals of the GGEDC BRE program:

1. Provide assistance with issues that could force an economic base company to succumb to challenges and subsequently close, and
2. Prevent economic base companies from relocating to a new community.
3. Identify opportunities for expansion



# Business Recruitment & Attraction

## Asset-Based Economic Development:

Asset-based economic development seeks to recruit and attract economic base employers to the Gallup-McKinley County region by leveraging proximity and access to state and national transportation assets including US Hwy 491, US Interstate I-40, and the Burlington Northern Santa Fe Railway (BNSF) Southern TransCon rail line.

- US Hwy 491 - \$80 million
- Purchase of Gamarco Property - \$33 million
- Construction of Gallup Energy Logistics Park - \$5 million
- Certification of Gallup Energy Logistics Park - \$1 million



***GGEDC is taking advantage  
of existing infrastructure assets  
to develop new economic base generators  
for McKinley County***

# Transportation Assets





# Why Focus on Transportation?

- 7,000 trucks every day on I-40
- 120 trains a day thru Gallup
- 137-year relationship with BNSF Railway
  - Heritage Community Award (2015)
  - Premier Sites Program (2016)

# ***The Economic Importance of Transportation***

A relation between the quantity and quality of transport infrastructure and the level of economic development is apparent. High density transport infrastructure and highly connected networks are commonly associated with high levels of development.

When transport systems are efficient, they provide **economic and social opportunities and benefits** that result in positive multipliers effects such as better accessibility to markets, employment and additional investments. When transport systems are deficient in terms of capacity or reliability, they can have an economic cost such as **reduced or missed opportunities and lower quality of life**.

# Rail

# Growth will concentrate in Megapolitans



# Energy Logistics Park









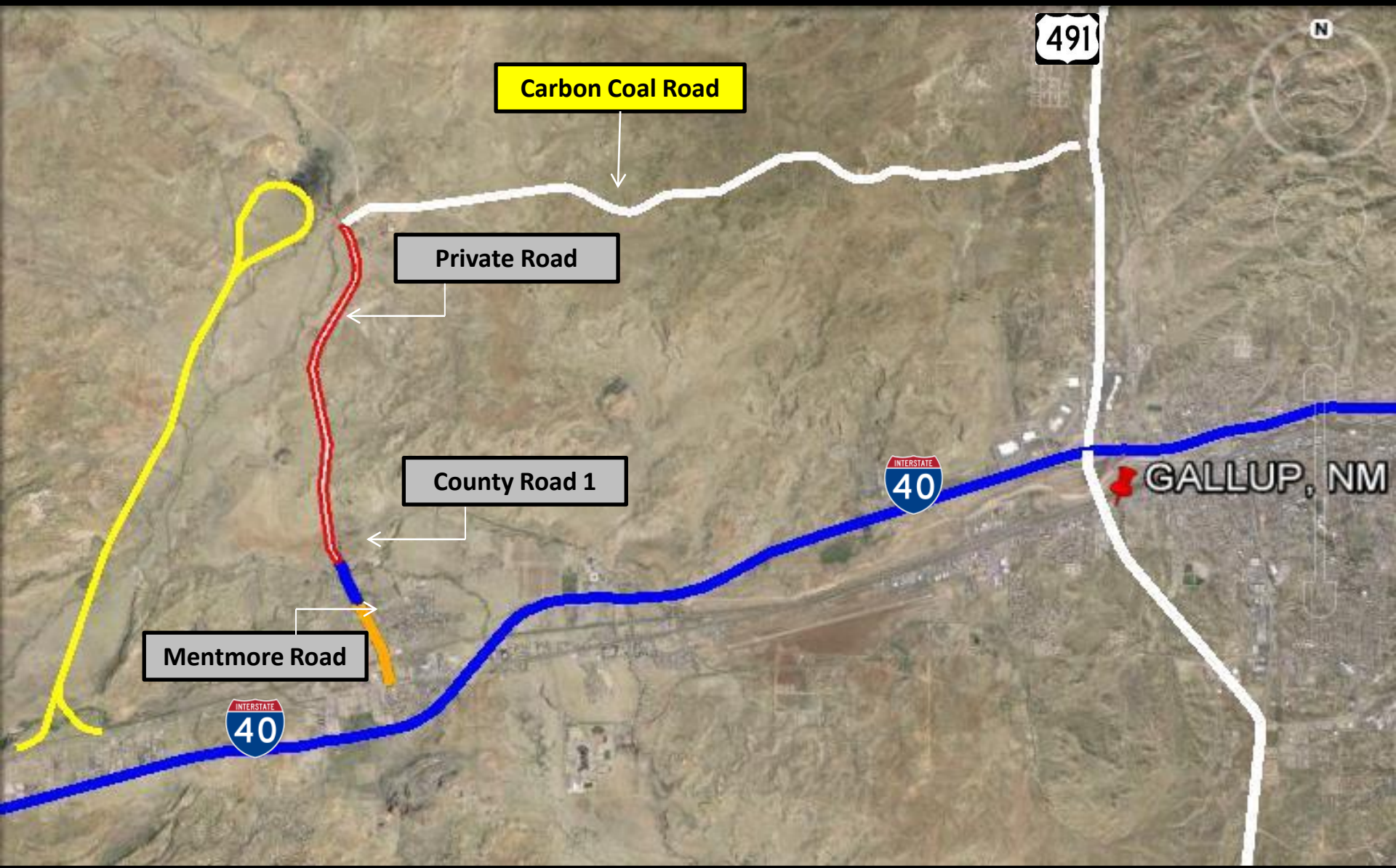
G★G★E★D★C

## Regional Transportation Corridors Northwest New Mexico

G★G★E★D★C



# Gallup Energy Logistics Park Transportation Corridors



# US Hwy 491/ 9<sup>th</sup> Street/ Chino Loop Road Existing Alignment



# Trucking

# Hours of Service

**11-hour driving rule** – a driver may *drive* up to 11 hours total before he is required to take a 10-hour break. The 11-hour clock only ticks while the truck is actually being driven.

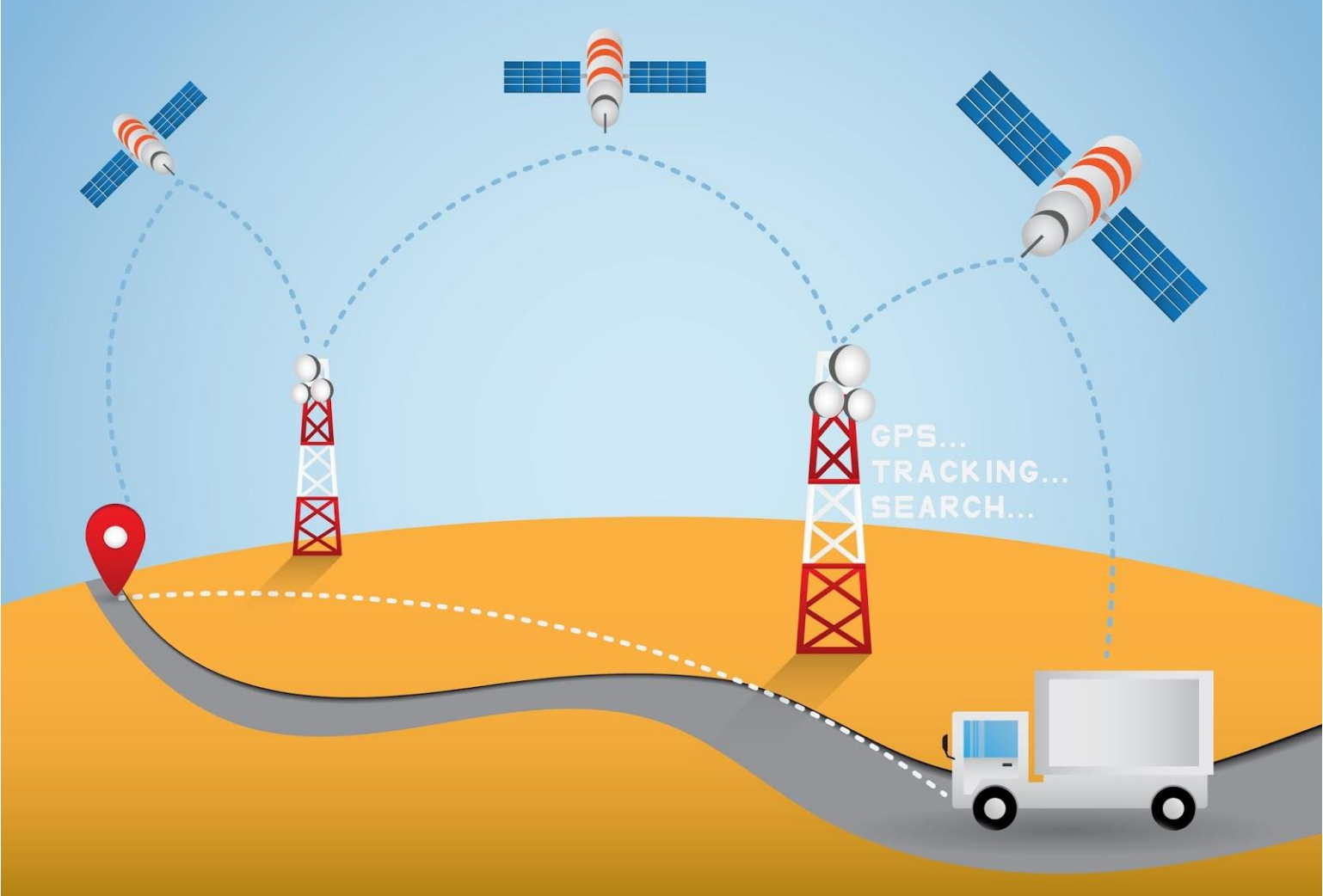
**14-hour on duty shift rule** – as soon as a driver changes his status to On Duty or Driving to start his day, a 14-hour clock starts ticking. This clock DOES NOT STOP ticking, even if the driver switches to Off Duty or Sleeper Berth. Once the 14 hours is up, the driver must take a 10-hour break before driving any more.

**70-hour in 8 days rule** - Total time spent Driving *and* On Duty cannot exceed 70 hours in any 8-day period. To completely reset the 70-hour clock requires a 34-hour restart.

# Electronic Logging Devices



# Electronic Logging Devices



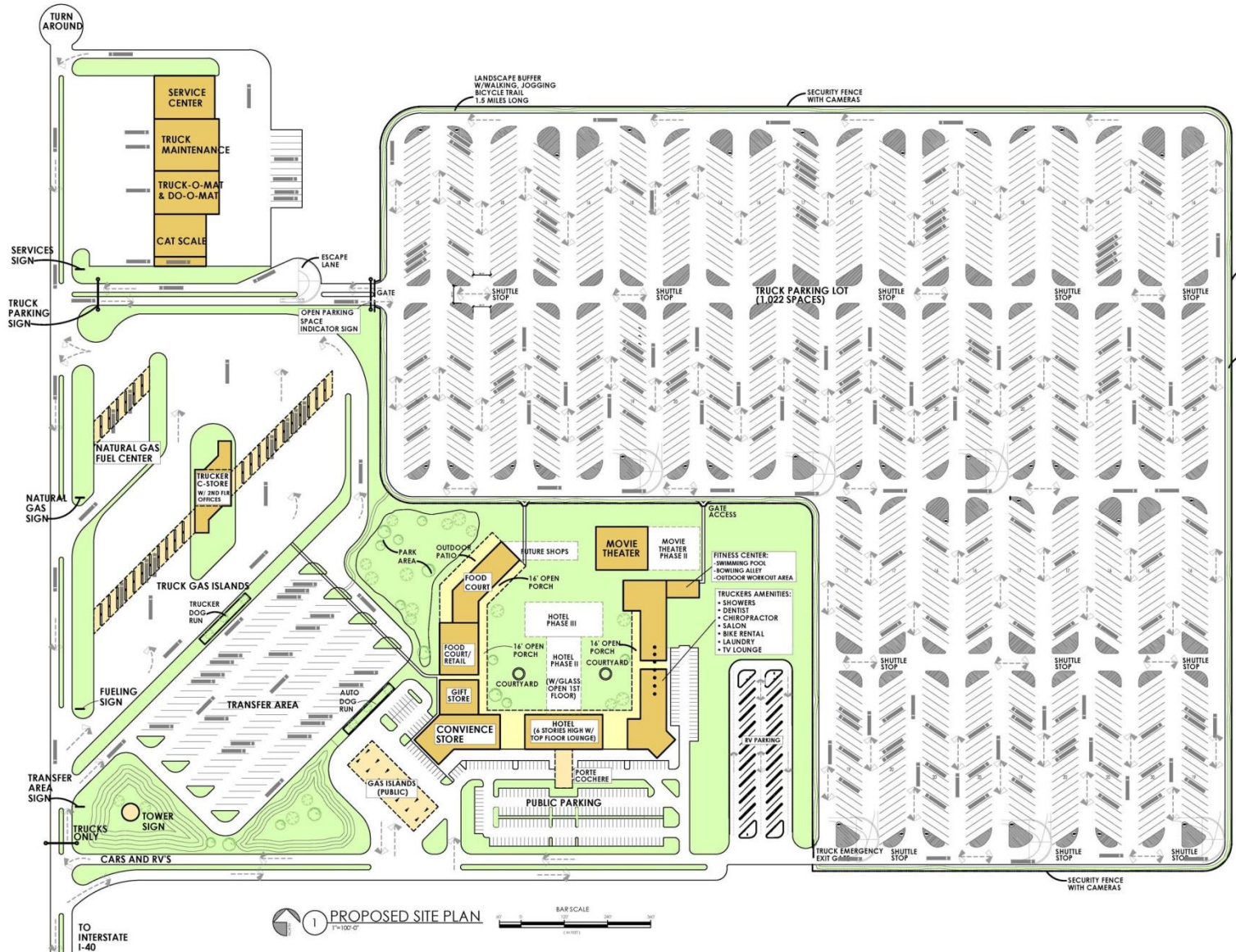
# Go West or East from Gallup



GLP – LBC | 666 miles | 9h 40min

GLP – OKC | 670 miles | 9h 47min

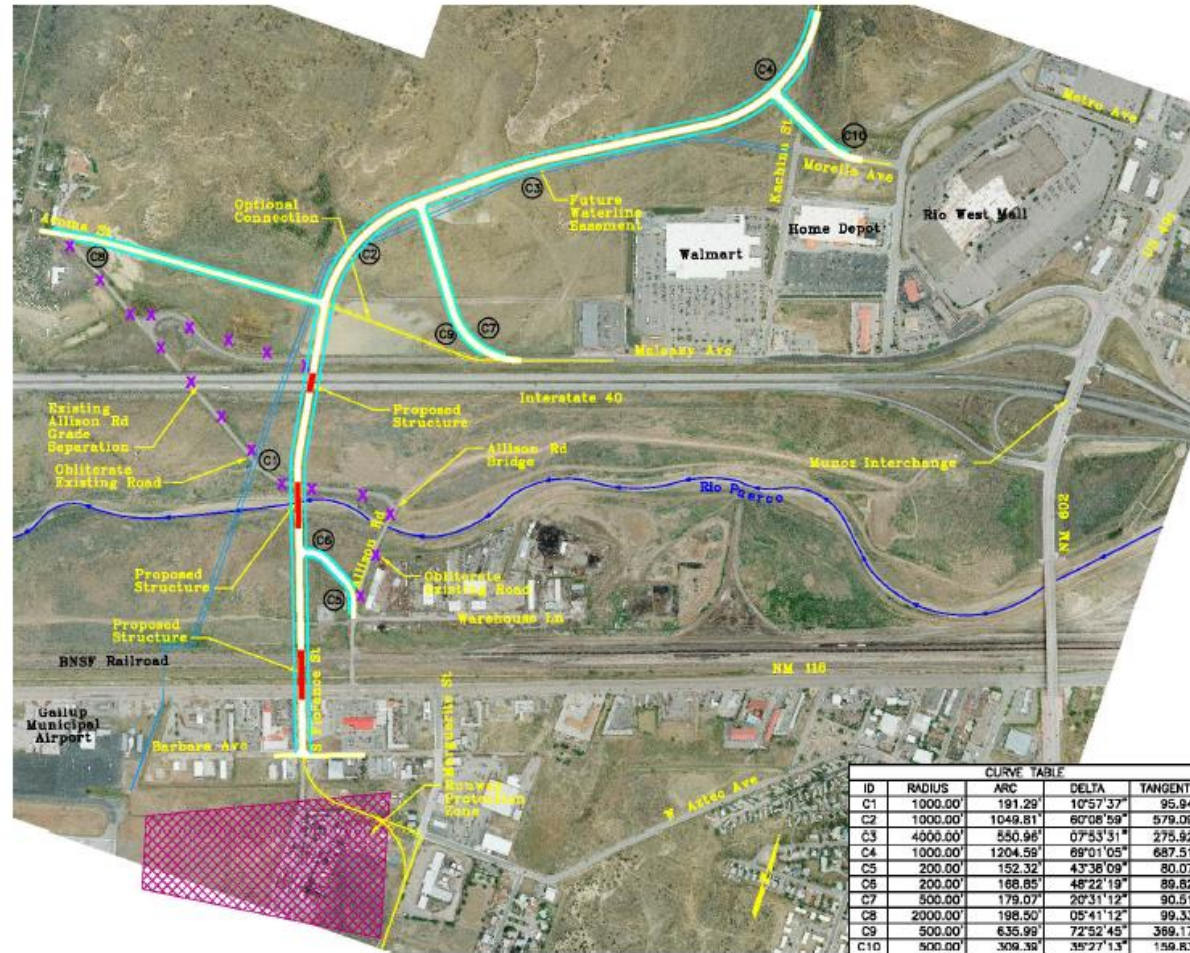
# Gallup Super Center / Trans Portal





# Interstate 40

# Allison Interchange



## Center Alignment Summary

### Advantages:

- A reasonable connection can be made to Warehouse Lane.
- The alignment is perpendicular to NM 118, the BNSF Railroad tracks, and the Rio Puerco to minimize structure costs.
- Most of the alignment is constructed off of the existing alignment. The Allison Road underpass can be utilized while the I-40 overpass is constructed.
- Acoma Drive can be connected to Allison Road using the existing I-40 underpass which would require less construction than a road on the north side of I-40.
- Avoids impacting the mesas north of I-40.

### Disadvantages:

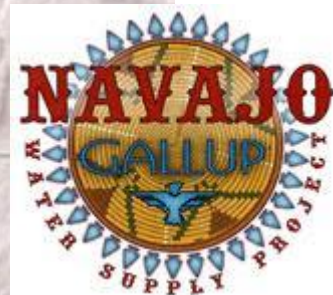
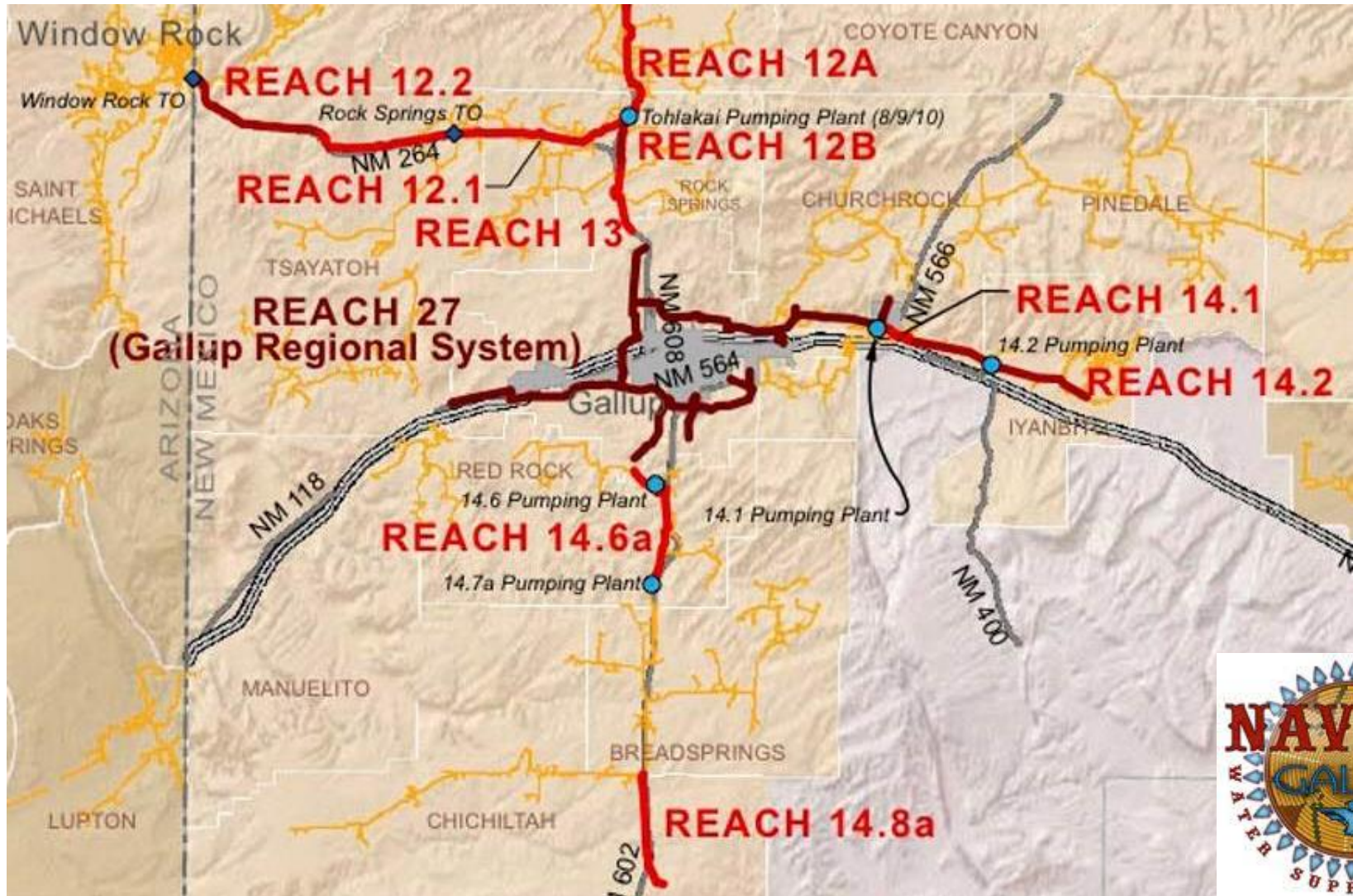
- Impacts the mobile home park on Florence Street.
- There will be one business relocated on Marguerite Street to extend W. Aztec Avenue.
- There will be one business relocated on the southwest corner of Florence St. and Barbara Ave. because access cannot be provided.
- Access impacts to the America's Best Value Inn Restaurant and Blake's Restaurant at NM 118. The alignment is shorter than the West Alignment but longer than the East Alignment so it will have a medium construction cost and amount of right-of-way takes.

# Allison Interchange



# Manufacturing Warehouse / Distribution

# Navajo Gallup Water Supply Project



# Navajo Gallup Water Supply Project











# Foreign Trade Zone – Subzone Designation

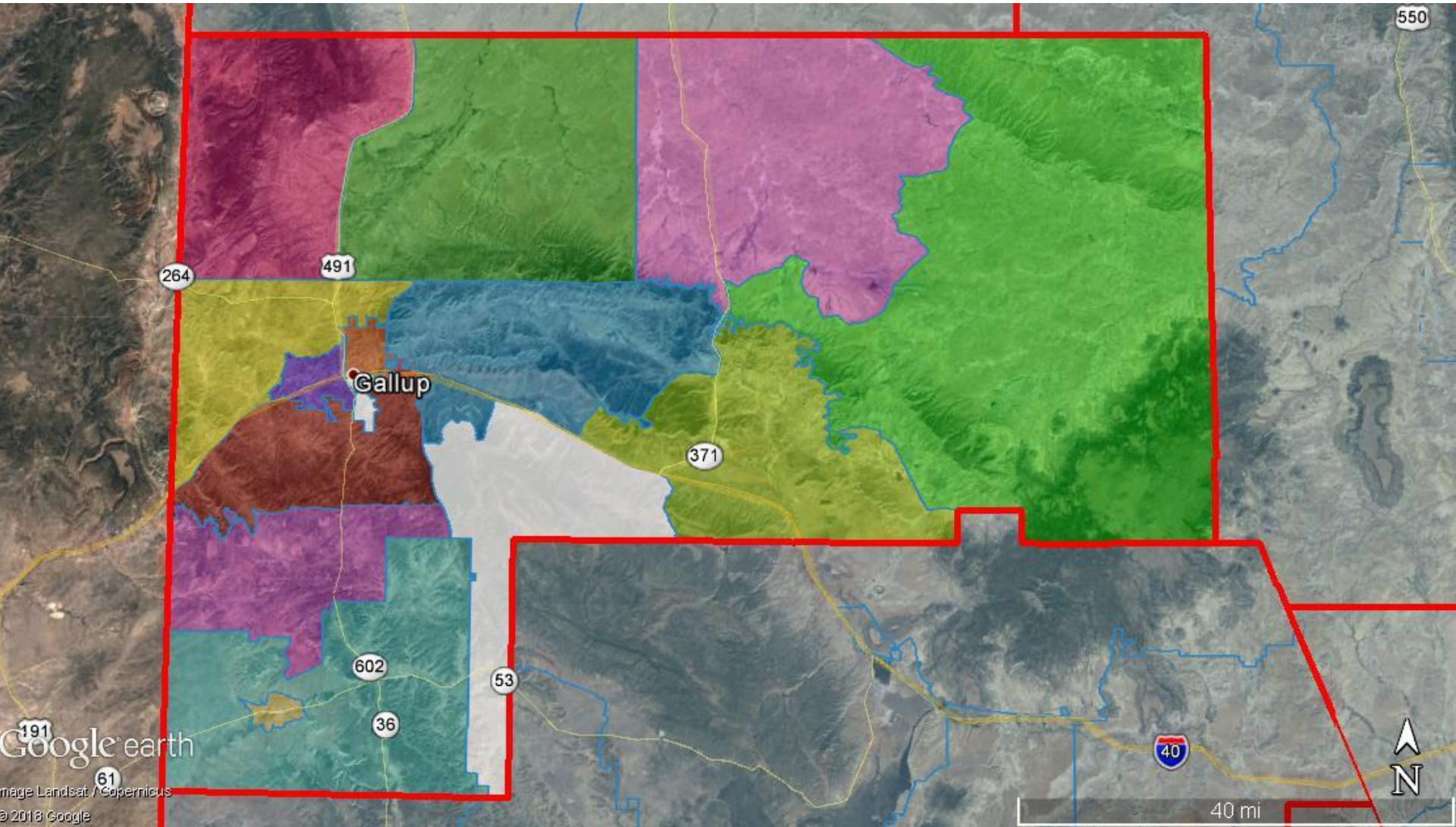


U.S. Customs and  
Border Protection

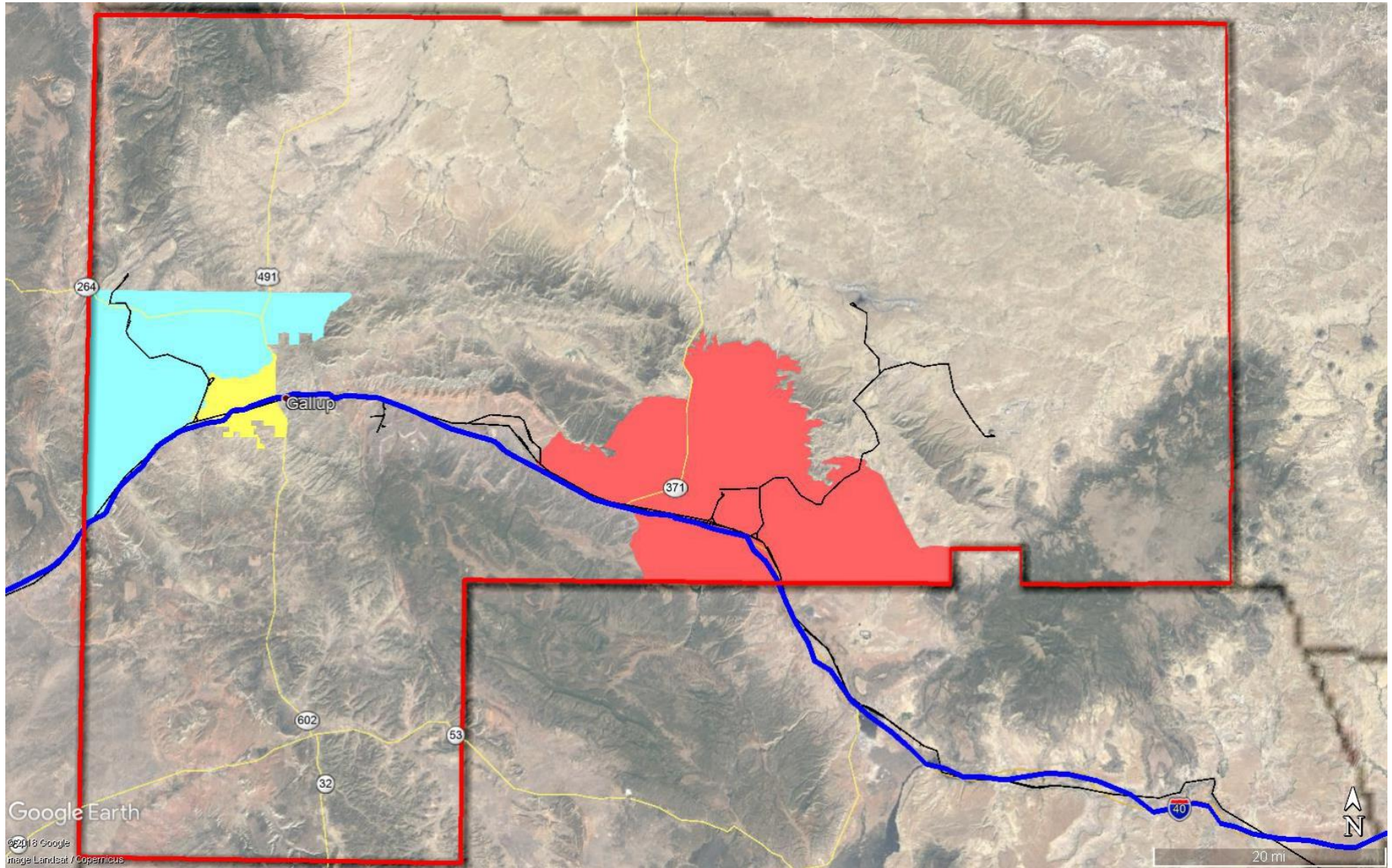


# Qualified Opportunity Zones

# Qualified Opportunity Zones



# Qualified Opportunity Zones



# What's Next?

- Carbon Coal Road - \$30M (Mar. 2021)
- 40-acre Master Plan Site
- 150,000 Square-Foot Manufacturing Facility

# What's Next?

The Gallup Mobility Hub presents an opportunity to continue the 137 year tradition of economic development through transportation investments.

The Gallup Mobility Hub integrates rail, truck, and air transport assets into a true hub and spoke.



Patty Lundstrom, CEcD  
Executive Director  
(505) 722-2980

[www.GallupEDC.com](http://www.GallupEDC.com)